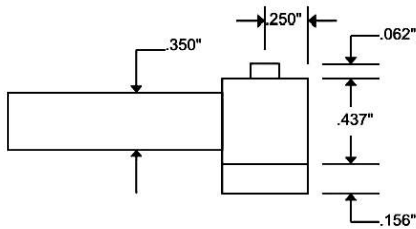




## New Product Bulletin #23

### The ITRCWC-100K Low-Profile Hi-lok® Installation & Removal Kit

#### Roller Clutch Wrench Details:



#### Specifications

- For Extreme, Heavy-Duty, Hi-lok® installation – over 100 in-lb. capacity where most roller wrenches slip at 50 in-lbs.! Tool steel integral socket construction for durability!
- Fourteen low-profile installation 3" & 6" roller clutch wrenches with 7/32"; 1/4"; 9/32"; 5/16"; 11/32"; 3/8" & 7/16" integral sockets with thru-hole for hex wrenches.
- 1/4" sq. dr. low-profile 3" & 6" reverse roller clutch wrench for use with removal sockets with thru-hole for hex wrenches
- Total overall head height for tool & socket *only* .655"!
- Three collar removal sockets for the -5, -6, and -8 diameter aluminum collars.
- Removal hi-lok pliers that will remove -5 thru -10 aluminum and steel collars.
- Non-slip, FOD-preventative coated handle for secure handling in limited access areas!
- Impact-resistant and waterproof kit box with contrasting FOD foam cutouts and labeling.

**Complete Kit  
Introductory Priced at  
\$1,675.00 ea.**

