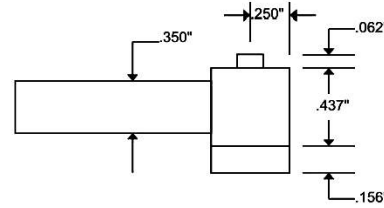




## New Product Bulletin #17

### The ITRCW-IS Integral Socket Roller Wrenches



#### **ITRCW-IS Heavy Duty; Low-Profile; Integral Socket Roller Clutch Wrenches**

- For Extreme, Heavy-Duty, Hi-lok® installation – over 100 in-lb. capacity where most roller wrenches slip at 50 in-lbs.! Tool steel integral socket construction for durability!
- Total overall head height for tool & socket **only** .655”!
- Thru-hole to allow hex wrench to hold hi-lok pin.
- Non-slip, FOD-preventative coated handle for secure handling in limited access areas!

**Introductory Priced at  
\$59.00 ea.**

**Also available in short  
lengths and custom kits!**



**ITRCW-100K custom –5  
through –8 diameter  
hi-lok installation and  
removal kit shown above.**

#### **Specifications**

Part Number	Integral Socket Hex Dia.	Head Height	OAL
ITRCW-IS187	3/16”	.655”	6.25”
ITRCW-IS218	7/32”	.655”	6.25”
ITRCW-IS250	1/4”	.655”	6.25”
ITRCW-IS281	9/32”	.655”	6.25”
ITRCW-IS312	5/16”	.655”	6.25”
ITRCW-IS343	11/32”	.655”	6.25”
ITRCW-IS375	3/8”	.655”	6.25”
ITRCW-IS437	7/16”	.655”	6.25”
ITRCWS-IS187	3/16”	.655”	3.25”
ITRCWS-IS218	7/32”	.655”	3.25”
ITRCWS-IS250	1/4”	.655”	3.25”
ITRCWS-IS281	9/32”	.655”	3.25”
ITRCWS-IS312	5/16”	.655”	3.25”
ITRCWS-IS343	11/32”	.655”	3.25”
ITRCWS-IS375	3/8”	.655”	3.25”
ITRCWS-IS437	7/16”	.655”	3.25”

